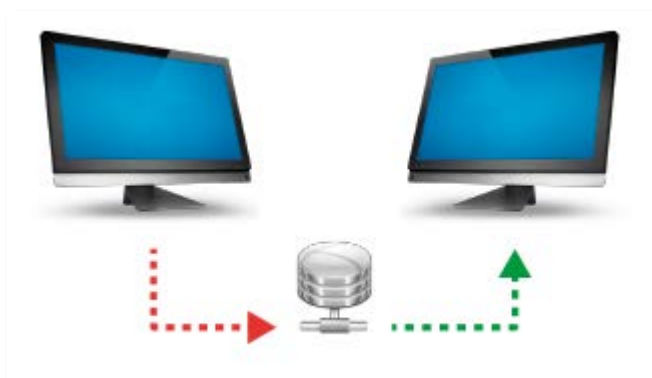


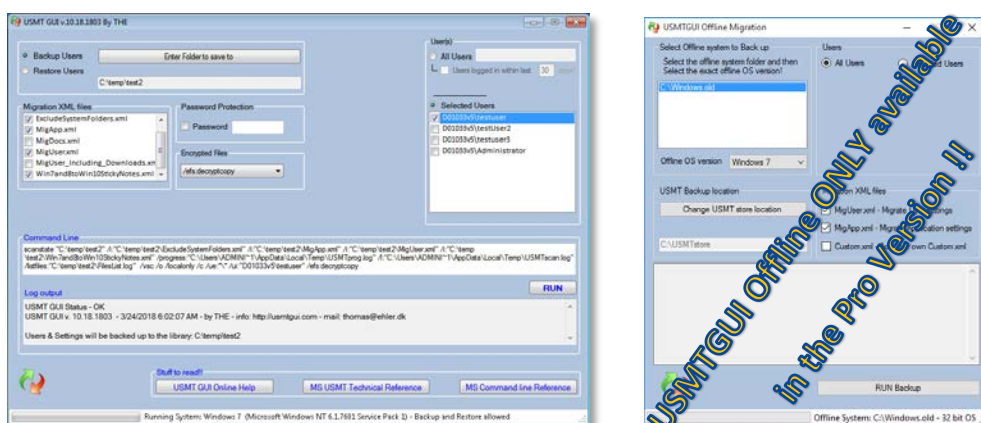


USMTGUI - User guide for backup and restore of local and Domain user profiles



Easy transfer of User Profiles from one PC to another.
Save data to USB hard disk or network and restore to the new PC

In this guide, you will see how simple it is to migrate user profiles (quick overview page 3 and 4):



1. From one computer to another (Use USMTGUI offline to back up from XP/Vista. Page 10)
2. From one Windows version to another
3. From one Domain to another (or local to Domain)
4. And even from one username to another (local or Domain).
5. With the Pro version it is even possible to migrate users of an old installation or from a disk where Windows will no longer boot (of course there's limitations if files are corrupted).
You can even use the supplied ISO to boot into USMT GUI Offline and rescue your profile 😊

USMTGUI will NOT however be able to back up a broken profile. This hence normally when the profile is broken, the Ntuser.dat file is just that – broken. Then Profile backup is not possible!

What does USMT backup then?

To see specifically what USMT does back up please see [Microsofts USMT reference for USMT:](#)



Table of Contents

USMTGUI - User guide for backup and restore of local and Domain user profiles..... 1

 What does USMT backup then? 1

1. Create a User profile backup 3

 Backup Errors..... 3

2. Restore a User profile 4

 To get back Sticky Notes and Edge favorites see chapter 4. *USMTafterburner* 4

 Restore Errors 4

3. Restore a user profile to other user/other Domain 5

 To get back Sticky Notes and Edge favorites see chapter 4. *USMTafterburner* 5

 Restore Errors..... 5

4. USMTafterburner 6

 To get back Sticky Notes and Edge browser favorites:..... 6

5. Save data to, and restore from, network share 7

6. Log file locations 8

7. Silent install 8

 Silent install 8

USMTGUI Offline User guide (Optional, Only with Pro version!!)..... 9

 Uses of USMTGUI Offline..... 9

 User Profile backup from Windows.Old “Upgrade- Install” folder..... 9

 User Profile Backup off hard disk from old or Dead Pc 9

 User Profile Backup off hard disk with Boot ISO 9

 Errors 9

USMTGUI Offline Usage Guide 10

USMTGUI St. Alone Corporate Automatization functionality 11

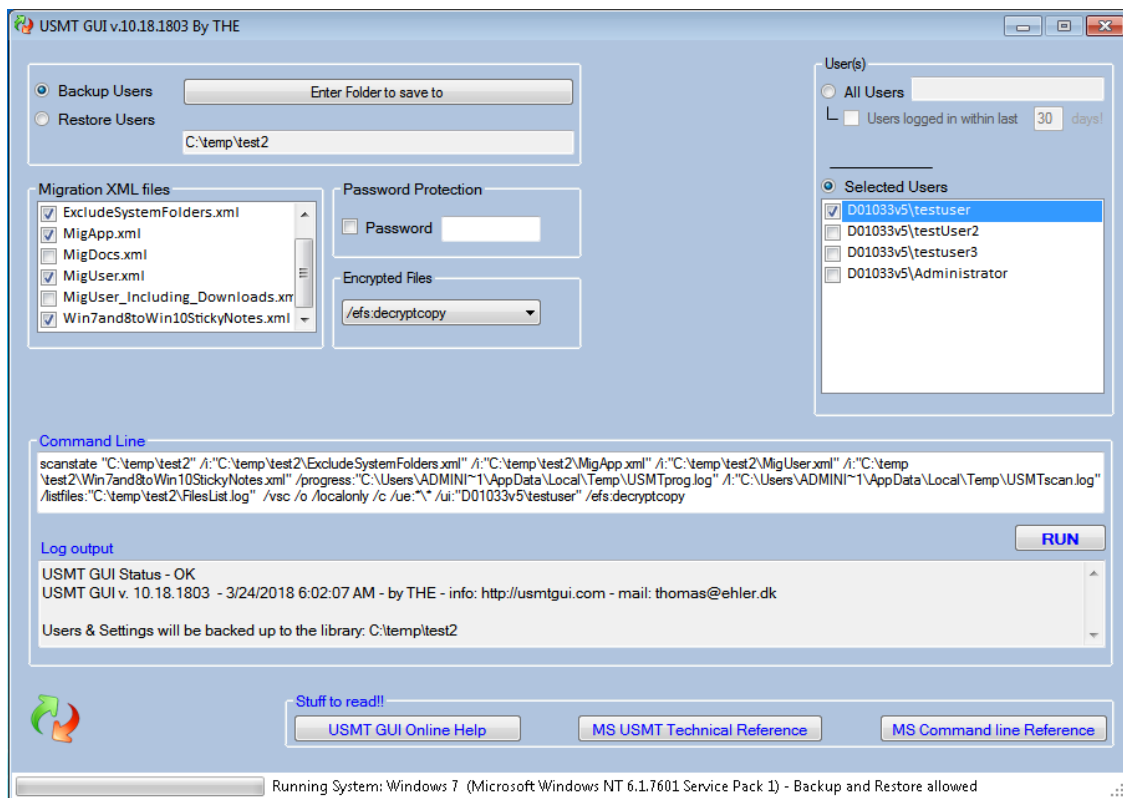
USMTGUI Version - Functionality cross reference	USMT GUI Home	USMTGUI Pro Home	USMTGUI Pro+ Home	USMTGUI Pro+ Open Home	USMTGUI Corporate
Migrates from Windows 7,8,8.1 & 10	X	X	X	X	X
Migrates to Windows 7,8,8.1 & 10	X	X	X	X	X
Migrates from/to Local accounts	X	X	X	X	X
Migrates to other User		X	X	X	X
Offline from Windows XP, Vista, 7,8,8.1 & 10		X	X	X	X
Emergency Migration BOOT ISO included		X	X	X	X
USMTGUI v10 St. alone Executable - no inst needed			X	X	X
USMTGUI v10 St. alone as Zip - customizable XMLs				X	X
USMTGUI v10 St. alone Corporate with automation				X	X
Enterprise logs;				X	X
Mapped Drives log				X	X
Mapped Printers log				X	X
Installed Apps log				X	X
Migrates Domain accounts					X
Migrates from Local to Domain accounts					X
Migrates from Domain to Local accounts					X
Migrates to other Domain					X



1. Create a User profile backup

After installing USMT GUI:

1. Preferably Logon as the local Administrator and start the interface.
2. Select where to store data (When storing to a network location please see chapter 4..)
3. Select which users you want to backup
4. Click "RUN" and wait for the Process to finish



Password: You CAN set a password without blanks. But don't forget it. There is no recovery method !!

Backup Errors

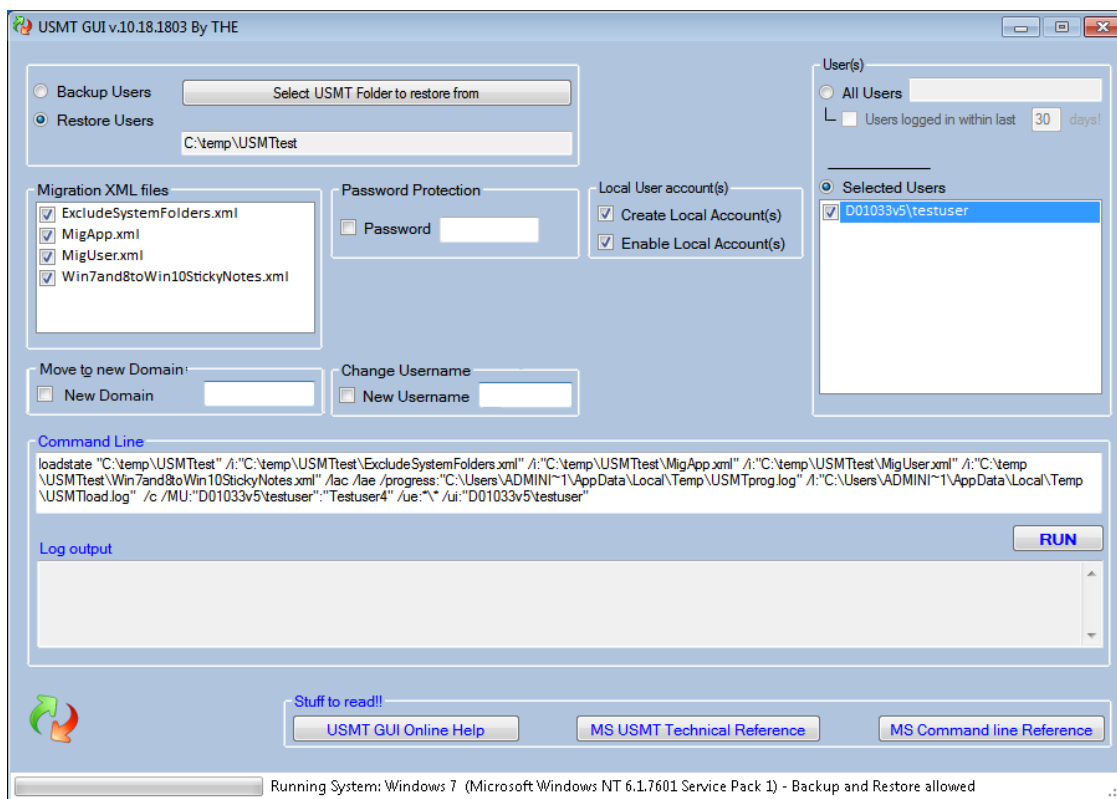
In the event you get any errors, that you do not completely understand, please send the log files and we will figure out where the problem lies.

To locate the USMT log files please locate your storage location (see chapter 5 for details)



2. Restore a User profile

1. Preferably Logon as the local Administrator and start the interface.
2. Point to where you stored data (When restoring from a network location please see chapter 4..)
3. Select which users you want to Restore
4. Click “RUN” and wait for the Process to finish



To get back Sticky Notes and Edge favorites see chapter 4. *USMTafterburner*

Restore Errors

In the event you get any errors, that you do not completely understand, please send the log files and we will figure out where the problem lies.

To locate the USMT log files please locate your storage location (see chapter 5 for details)

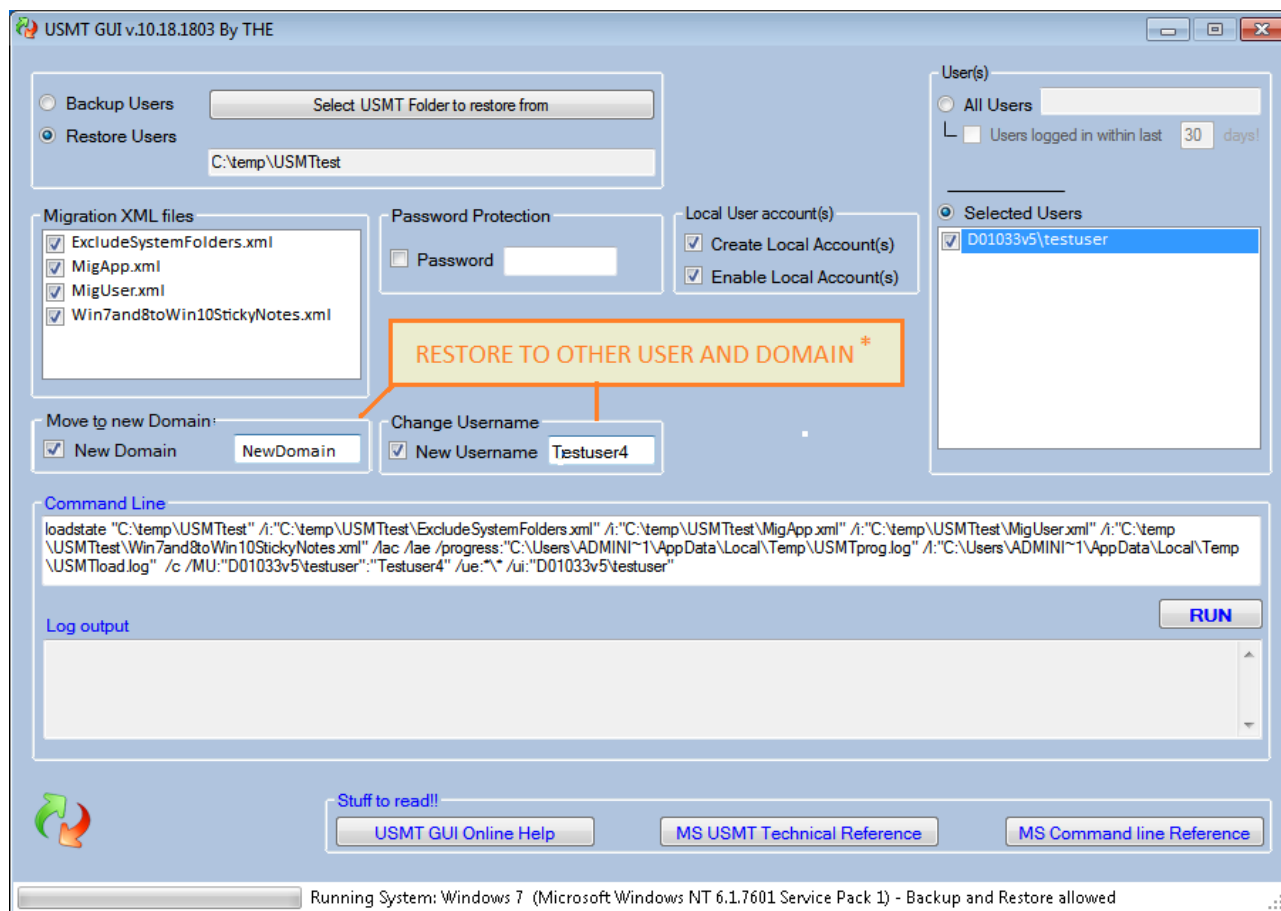
NOTES:

- IF restoring to a **Local account** that already exists on the Pc, please deselect the switches “Create User Account(s)” and Enable User Account(s)”
- IF restoring to a **Domain account**, please make sure the account IS present on the Domain but has **not** logged in locally on the PC you restore to. In case the user already did login on that PC, please delete the users profile locally prior to restoring, through “Advanced System Settings”.
- When logging into a new restored *local profile*, you will be prompted to change password. Please note that the “current” password is blank. Just set a new one.



3. Restore a user profile to other user/other Domain

When restoring a user to a new user name, or users to another domain, use the following selections



The “Move to new Domain” is supported in USMTGUI Corp versions, and only visible on Domain joined PC’s.

Also, the “New Username” is only available when only one user is selected in the “Selected Users” box.

To get back Sticky Notes and Edge favorites see chapter 4. *USMTafterburner*

Restore Errors

In the event you get any errors, that you do not completely understand, please send the log files and we will figure out where the problem lies.

To locate the USMT log files please locate your storage location (see chapter 5 for details)

NOTES:

- IF restoring to a **Local account** that already exists on the Pc, please deselect the switches “Create User Account(s)” and Enable User Account(s)”
- IF restoring to a **Domain account**, please make sure the account IS present on the Domain but has **not** logged in locally on the PC you restore to. In case the user already did login on that PC, please delete the users profile locally prior to restoring, through “Advanced System Settings”.



4. USMTafterburner

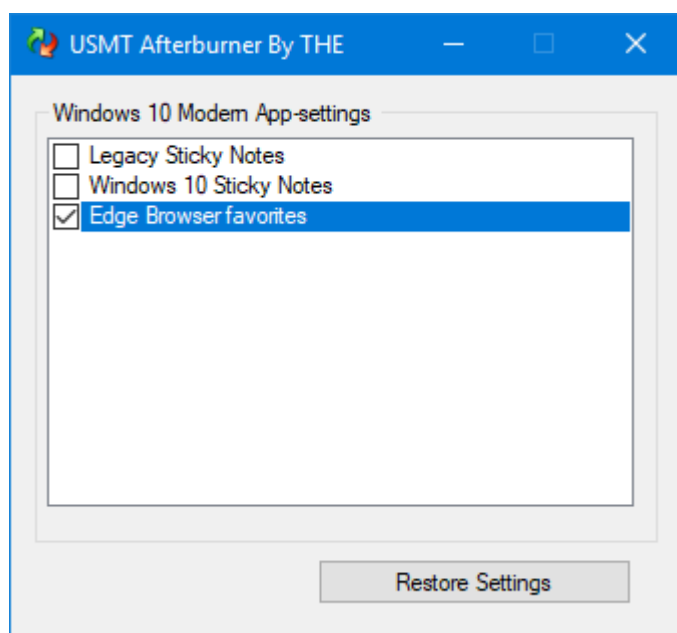
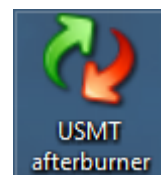
During the backup, selected Modern App settings/data are backed up to an alternative temporary location. The *USMTAfterburner* is added to the backup and thereby automatically restored on the new users/profiles desktop when the users data is restored.

Only with *Win10.xml* or *Win7and8toWin10StickyNotes.xml* selected during backup and restore!!!

-

To get back Sticky Notes and Edge browser favorites:

When logging on with the new user/profile, open and then close the *Edge browser* and *Sticky Notes* once. Then run USMT Afterburner to restore Sticky Notes and Edge favorites.



Note: To restore Legacy (old 7/8 and early Win10) Sticky Notes, do not open Sticky Notes prior to restoring.
- Don't worry, USMT Afterburner will guide you 😊



5. Save data to, and restore from, network share

To get the logic in why this is an issue you must first understand a little more about what really goes on when you run USMT GUI.

USMT is a command line tool from Microsoft. USMT GUI just simplifies the use, since USMT is a highly technical tool to run by hand.

So what USMTGUI actually does, is setup a command line for USMT, run it, and monitor that everything goes well. To be able to access all the selected users data, USMT **must** run in an Elevated Command Prompt and the GUI does that for you..

So far so good... ???

Well here comes the culprit regarding storing on a network share.

When/if you, as another user than **Local Administrator** select a network share to save to, you do it with the rights belonging to that user. However, USMT runs in the Elevated Command Prompt and that does NOT have access to the users mounted drive letters.

Solution:

1. Store locally and move the data after
2. Logon as *the* **Local Administrator** and map the drive with credentials before running USMT GUI.
3. Open a command prompt with "Run as Administrator" and map the Network location by hand before running USMT GUI.
4. Use an UPC path (you know: [\\server](#)FQDN\share)



6. Log file locations

To locate the USMT log files please just open File Explorer and browse to the location where you chose to store your backup or where the backup you tried to restore is residing.

Copy all log files starting with "USMT" and send them to us at thomas@ehler.dk

7. Silent install

Silent install

"USMTGUI 10.exe" /quiet

"USMTGUI 10 Pro.exe" /quiet

"USMTGUI 10 Pro Corp.exe" /quiet



USMTGUI Offline User guide (Optional, Only with Pro version!!)

Uses of USMTGUI Offline

User Profile backup from Windows.Old “Upgrade- Install” folder

If you have made an “Upgrade-Install”, an old installation folder is present. C:\Windows.Old.. In that folder there is a complete copy of your old installation and if you want one or more user profiles from there, you can use USMTGUI Offline, installed with the Pro version side by side to USMTGUI.

NOTE: Since MS Scanstate does not run natively on **XP** and **Vista**, you must use either of the two methods below to backup user profiles from XP and Vista! Annoying but it saves your day. ☺

User Profile Backup off hard disk from old or Dead Pc

By connecting a functioning disk, from an old or dead Pc, to a Pc with USMT Offline installed, you can backup user profiles and then restore to a new Pc with USMTGUI.

User Profile Backup off hard disk with Boot ISO

If you have a Pc where Windows for some reason will no longer boot, but the hardware seems okay, you can even use the downloadable ISO to boot into USMT GUI Offline and rescue your user profiles

Errors

Of course, there are limitations if fx files are corrupted. Typically, a corrupt user profile will **not** be successfully backed up!)

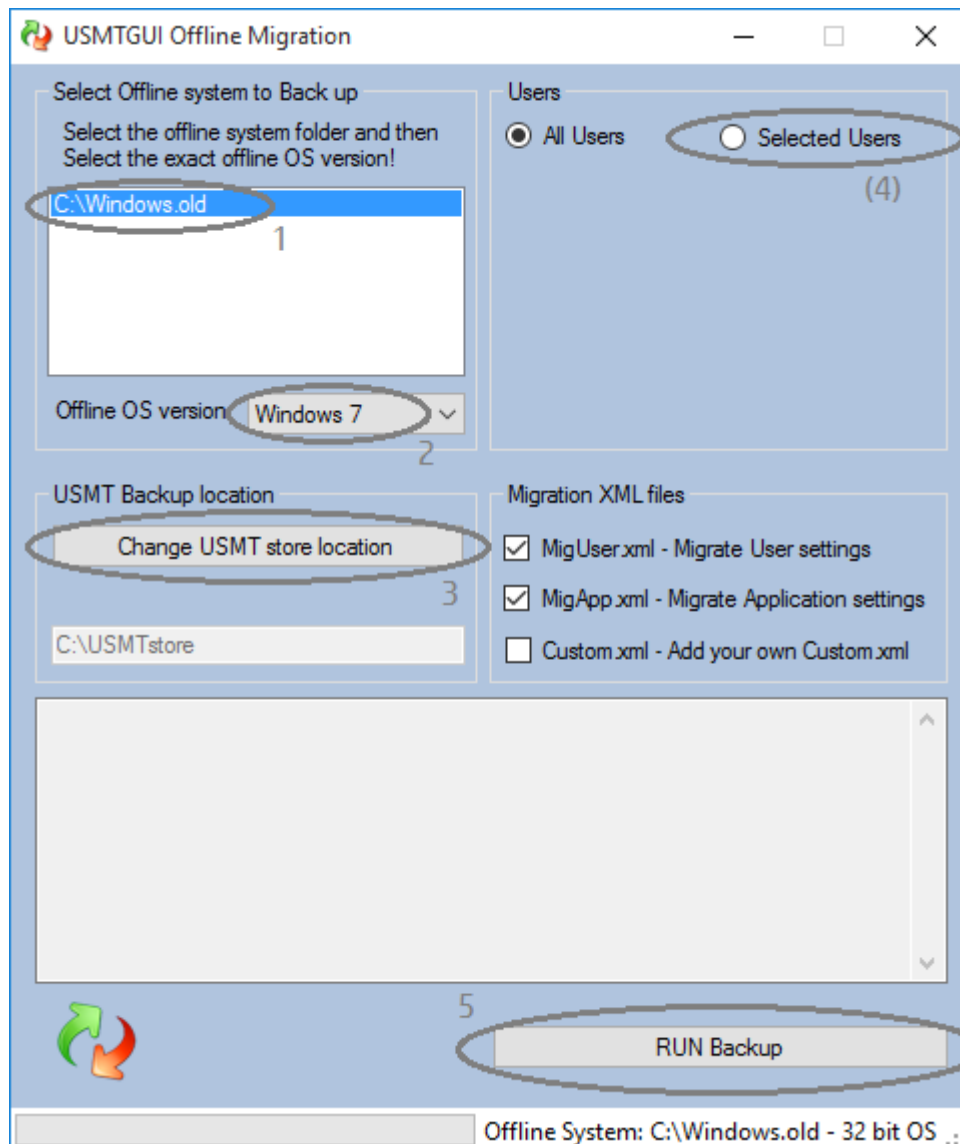
Note: USMTGUI Offline CANNOT migrate user profiles of a running Windows.
Use USMTGUI for that!



USMTGUI Offline Usage Guide

Once you have the USMTGUI Offline interface loaded one way or the other, you simply

1. Select the Windows folder in question
2. Select operating system version.
3. Select where to store the data
4. Optionally, if you want only to backup certain profiles, click “Selected Users” and let USMTGUI Offline detect the user profiles available (typically this takes a few minutes) and select.
5. Press “RUN Backup”



Note: Use **USMTGUI** to restore the users. NOT USMTGUI Offline.



USMTGUI St. Alone Corporate Automatization functionality

The USMTGUI St. Alone Ent.zip file contains a custom version of USMTGUI that can be controlled by a config file. If the config file **USMTGUIAutoSetup.txt** is present, the four top lines will be read, and acted upon.

Thereby anyone can use USMTGUI to make a Profile backup and it is a very swift tool in the everyday work scene for technicians handling many Pc's.

Below is the USMTGUIAutoSetup.txt file with self explanatory comments:

```
-----  
"\\serverFQDN\share\folder\"          < Storagepath  
120                                   < Days since last login  
                                     < Encryption password  
False                                 < Start automatically without user intervention  
-----
```

Top Four !! lines of this file will be read.

Line 1 is the preconfigured storage path.

⌘ You can use a hard coded path (eeg "c:\temp\usmttest\") or a Network UNC path eeg

"\\server\share\folder\")

⌘ or use a combination of "%~d0" / "%~dp0" / %Systemdrive% and path.

⌘ %~d0 will substitute with the drive from where USMTGUI is run.

⌘ %~dp0 will substitute with the drive AND path from where USMTGUI is run.

⌘ %Systemdrive%\ will substitute with the drive where windows is installed

⌘ Example where USMTGUI runs from h:\Ehlertech\
⌘ "%~d0\USMTtest\" will store in the folder h:\USMTtest\%Computername%

⌘ "%~dp0\USMTtest\" will store in the folder h:\Ehlertech\USMTtest\%Computername%

⌘ Do NOT add Computername or %Computername% as the GUI does it for you.

⌘ - IF the storage path does not exist the Auto function exits.

⌘ - IF the storage path including %Computername%\mig\ folder does exist,

⌘ the GUI sets up for restore

Line 2 is the 'Number of days since last login'

⌘ - If set to blank all users will be included

⌘ - If set to "0" only currently logged in user(s) will be backed up.

⌘ - If set to 1-999 all users logged in within the timeframe will be backed up

Line 3 is Encryption password

Set to blank or set to any passcode without blanks

Line 4 is autorun True/False and MUST be set to either True or False.